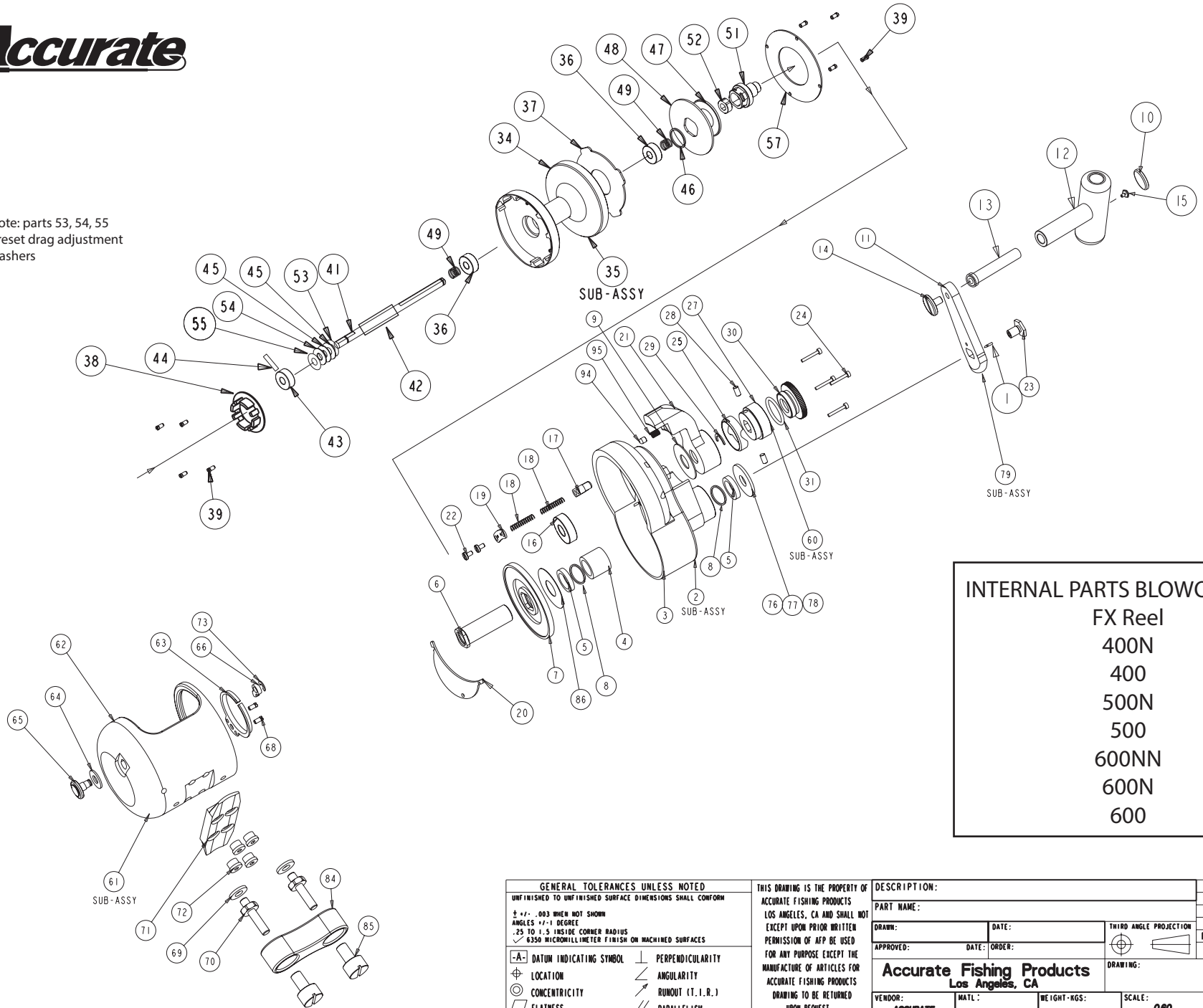


Accurate

Note: parts 53, 54, 55
preset drag adjustment
washers



INTERNAL PARTS BLOWOUT (IPB)
FX Reel
 400N
 400
 500N
 500
 600NN
 600N
 600

GENERAL TOLERANCES UNLESS NOTED		THIS DRAWING IS THE PROPERTY OF ACCURATE FISHING PRODUCTS LOS ANGELES, CA AND SHALL NOT BE USED FOR ANY PURPOSE EXCEPT THE MANUFACTURE OF ARTICLES FOR ACCURATE FISHING PRODUCTS UPON REQUEST		DESCRIPTION:		COPY		APPR			
UNFINISHED TO UNFINISHED SURFACE DIMENSIONS SHALL CONFORM		UNFINISHED TO UNFINISHED SURFACE DIMENSIONS SHALL CONFORM ± .01, .003 WHEN NOT SHOWN ANGLES 17-1 DEGREE .25 TO 1.5 INSIDE CORNER RADIUS .6350 MICROMILLIMETER FINISH ON MACHINED SURFACES		PART NAME:		ON					
-A- DATUM INDICATING SYMBOL ⊕ LOCATION ⊙ CONCENTRICITY ▭ FLATNESS				DRAWN: _____ DATE: _____		THIRD ANGLE PROJECTION		MFG ENG			
⊥ PERPENDICULARITY ∠ ANGULARITY ↗ RUNOUT (T. I. R.) ∥ PARALLELISM				APPROVED: _____ DATE: _____ ORDER: _____		DRAWING:		PATI SHOP		COMPUTER GENERATED	
				Accurate Fishing Products Los Angeles, CA		SIZE: C					
		VENDOR: ACCURATE		MATERIAL: _____		WEIGHT-RGS: _____		SCALE: 0.80		SHEET: 1 of 1	

1 BOSS EXTREME HANDLE KEEPER SCREW	1 B-5806	
2 FX 400 SIDEPLATE SUB-ASSY	1 B-6774	x
2 FX 400X SIDEPLATE SUB-ASSY	1 B-6774-1	x
2 FX 500 SIDEPLATE SUB-ASSY	1 B-6760	x
2 FX 500X SIDEPLATE SUB-ASSY	1 B-6760-1	x
2 FX 600 SIDEPLATE SUB-ASSY	1 B-6762	x
2 FX 600X SIDEPLATE SUB-ASSY	1 B-6762-1	
3 FX 400/400N SIDEPLATE	1 B-6448	x
3 FX 500 SIDEPLATE	1 B-6496	x
3 FX 600 SIDEPLATE	1 B-6568	x
4 STAINLESS STEEL ANTI-REV BEARING	1 S-3908SS	x
5 FX GEAR SHAFT BUSHING .105	1 B-5376	x
5 FX GEAR SHAFT BUSHING .875 WIDE	1 B-5378	x
6 FX MAIN GEAR SHAFT	1 B-5776	x
7 FX LARGE MAIN GEAR 4:1	1 B-5780-1	x
7 FX LARGE MAIN GEAR 6:1	1 B-5782-1	x
8 SEAL WASHERS	2 B-7268	
9 BX2 MAIN LEVER ARM WASHER	1 B-1028	x
10 HANDLE KNOB END CAP	1 B-5734	
11 FX EXTREME CONTOUR HANDLE ARM	1 B-5384	x
11 FX LONG CONTOUR HANDLE ARM	1 B-5772	
12 FX EXTREME HANDLE KNOB	1 B-5732	x
13 FX HANDLE PIN WITH DOUBLE-D	1 B-5696-1	x
14 HANDLE ARM PIN SCREW HEX HEAD	1 L-1722	x
15 FX ATD HANDLE PIN SCREW LEFT HAND	1 B-1190	x
16 FX GEAR SIDEPLATE BEARING	1 B-1272	x
17 FX STRIKE BUTTON	2 L-832	x
18 FX STRIKE BUTTON SPRING	4 70080S	x
19 FX STRIKE BUTTON COVER	2 L-1050	x
20 FX 400 GEAR COVER	1 B-3670	x
20 FX 500 GEAR COVER	1 B-2850	x
20 FX 600 GEAR COVER	1 B-1626	x
21 FX 400 MAIN LEVER ARM	1 B-1032-1	x
21 FX 500 MAIN LEVER ARM	1 B-2706-1	x
21 FX 600 MAIN LEVER ARM	1 B-1326-1	x
22 FX STRIKE BUTTON SCREWS	4 B-1290	x
23 FX GEAR SHAFT HANDLE SCREW	1 B-5778	
24 FX SIDEPLATE FRAME TORX SCREWS	4 B-1294	x
25 FX TENSION CAM TRACK	1 B-6460-1	x
27 FX 400 SINGLE SPEED SPOOL SHAFT	1 B-988	x
28 BOSS TENSION CAM PIN	2 L-872	x
29 BOSS LEVER RETAINER	1 B-1640	x
30 FX TENSION CAM WASHER LIGHTENED	1 B-6394-1	x
31 BOSS TENSION CAM O-RING	1 B-1292	x
34 FX 400 NARROW SPOOL	1 B-6502	x
34 FX 400 SPOOL	1 B-6386	x
34 FX 500 SPOOL	1 B-6492	x
34 FX 500 NARROW FRAME	1 B-6504	
34 FX 600 SPOOL	1 B-6518	

34 FX 600 NARROW SPOOL	1 B-6510	x
34 FX 600 NARROW NARROW SPOOL	1 B-6514	
35 FX 400 NARROW SPOOL 4:1 SUB-ASSY	1 B-6770	x
35 FX 400 SPOOL 4:1 SUB-ASSY	1 B-6772	x
35 FX 500 SPOOL 4:1 SUB-ASSY	1 B-6764	x
35 FX 500 NARROW SPOOL 4:1 SUB-ASSY	1 B-6766	x
35 FX 600 SPOOL 4:1 SUB-ASSY	1 B-6768	x
35 FX 600 NARROW 6:1 SUB-ASSY	1 B-6765	x
35 FX 600 NARROW NARROW SPOOL 4:1 SUB	1 B-6767	x
35 FX 400 NARROW SPOOL 6:1 SUB-ASSY	1 B-6770-1	
35 FURY 400 SPOOL 6:1	1 B-6772-1	x
35 FX 500 SPOOL 4:1 SUB-ASSY	1 B-6764-1	x
35 FX 500 NARROW SPOOL 6:1 SUB-ASSY	1 B-6766-1	
35 FX 600 SPOOL 6:1 SUB-ASSY	1 B-6768-1	
35 FX 600 NARROW 6:1 SUB-ASSY	1 B-6765-1	
35 FX 600 NARROW NARROW SPOOL 6:1 SUB	1 B-6767-1	
36 BOSS SPOOL BEARING	2 B-1624	x
37 BOSS 400 CARBON FIBER WASHER	1 B-1046	x
37 BOSS 500 FIBER WASHER	1 B-1142	x
37 BOSS 600 FIBER WASHER	1 B-1264	x
38 FX CLICKER PINS	1 B-6384	x
39 FX SPOOL COVER SCREW	8 B-2754	x
41 FX 400 NARROW SPOOL SHAFT	1 B-6584	x
41 FX 400 600 NARROW SPOOL SHAFT	1 B-6438	x
41 FX 600 SPOOL SHAFT & FX2 400 600 NARR	1 B-6388	x
41 FX 600 SPOOL SHAFT	1 B-6614	x
42 FX SPOOL SHAFT SLEEVE 400N 500N 600N	1 B-7732	x
42 FX SPOOL SHAFT SLEEVE 400 600N	1 B-7734	x
42 FX SPOOL SHAFT SLEEVE 500	1 B-7736	x
42 FX SPOOL SHAFT SLEEVE 600	1 B-7738	
43 FX SPOOL SHAFT BUSHING	1 B-6414	
44 FX SPOOL SHAFT PIN	1 B-6410	
45 FX SPOOL SHAFT BELLEVILLE WASHER	2 B-6398	
46 BOSS DRAG CAP RETAINER	1 B-1048	
47 BOSS BELLEVILLE WASHER	1 B-1020	x
48 BOSS 400 400N DRAG WASHER	1 B-1014	x
48 BOSS 500 DRAG WASHER	1 B-1156	x
48 BOSS 600 DRAG WASHER	1 B-1314	x
49 BOSS SPOOL SHAFT SPRING	2 B-1718	x
51 FX PINION GEAR 4:1	1 B-6606	x
51 FX PINION GEAR 6:1	1 B-6390	x
52 FURY PINION BEARING	1 B-6464	x
53 BOSS SPOOL SHAFT ADJUSTMENT WASHER	2 B-1254	x
54 BOSS SPOOL SHAFT ADJUSTMENT WASHER	2 B-1606	x
55 BOSS SPOOL SHAFT ADJUSTMENT WASHER	2 B-1610	x
57 BOSS 400 SPOOL COVER G/S	1 B-1524	x
57 BOSS 500 SPOOL COVER G/S	1 B-1526	x
57 BOSS 600 SPOOL COVER G/S	1 B-1528	x
61 FX 400 NARROW FRAME SUB-ASSY	1 B-5756	x

61 FX 400 FRAME SUB-ASSY	1 B-6758	x
61 FX 500 FRAME SUB-ASSY	1 B-7526	x
61 FX 500 NARROW FRAME SUB-ASSY	1 B-7524	x
61 FX 600 FRAME SUB-ASSY	1 B-7528	x
61 FX 600 NARROW FRAME SUB-ASSY	1 B-7530	x
61 FX 600 EXTRA NARROW FRAME SUB-ASSY	1 B-7532	x
62 FX 400 NARROW FRAME	1 B-6570	x
62 FX 400 FRAME	1 B-6416	x
62 FX 500 FRAME	1 B-6494	x
62 FX 500 NARROW FRAME	1 B-6504	x
62 FX 600 FRAME	1 B-6516	
62 FX 600 NARROW FRAME	1 B-6508	x
62 FX 600 NARROW NARROW FRAME	1 B-6512	x
63 BOSS CLICKER RING	1 B22	x
64 BOSS CLICKER KNOB WASHER	1 B-1126S	x
65 BOSS CLICKER KNOB	1 B-1038	x
66 BOSS CLICKER DOG	1 B-1040-1	x
68 CLICKER SCREWS	2 B-1296	x
70 BOSS FRAME STUD	2 B-1154	x
71 BOSS BASE FOOT	1 B-1084	x
72 BOSS BASE FOOT SCREW	4 B-1278	x
73 ATD GEAR SHIFTER SHAFT	1 L-1342	x
76 BOSS EXTREME SINGLE SPEED HANDLE W/	1 B-5798-1	x
77 BOSS EXTREME SINGLE SPEED HANDLE W/	1 B-5798-2	x
78 BOSS EXTREME SINGLE SPEED HANDLE W/	1 B-5798-4	x
79 FURY 400/500 HANDLE SUB-ASSY	1 B-7899-1	x
79 FURY 600 HANDLE SUB-ASSY	1 B-7899-3	
84 BOSS NARROW FRAME CLAMP	1 B-660N	x
84 BOSS FRAME CLAMP	1 B-660	
85 BASE CLAMP FRAME SLEEVE NUTS	2 B-1444	x
86 BOSS 2-SPEED MAIN GEAR SHAFT WASHER	1 B-5430	x