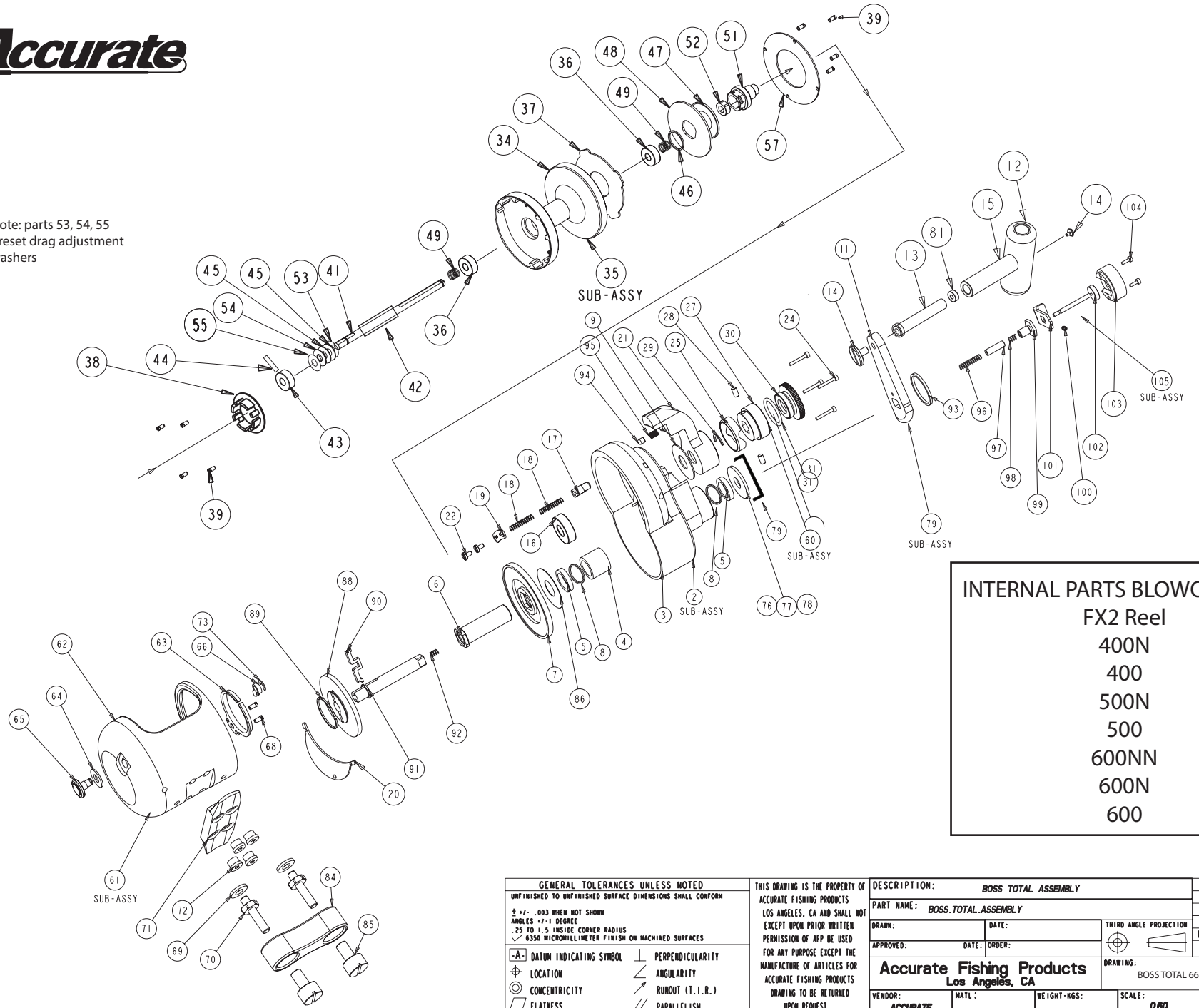


Accurate

Note: parts 53, 54, 55
preset drag adjustment
washers



INTERNAL PARTS BLOWOUT (IPB)
FX2 Reel
 400N
 400
 500N
 500
 600NN
 600N
 600

GENERAL TOLERANCES UNLESS NOTED		DESCRIPTION: BOSS TOTAL ASSEMBLY		DATE:	COPY	APPR
UNFINISHED TO UNFINISHED SURFACE DIMENSIONS SHALL CONFORM		THIS DRAWING IS THE PROPERTY OF ACCURATE FISHING PRODUCTS LOS ANGELES, CA AND SHALL NOT BE USED FOR ANY PURPOSE EXCEPT THE MANUFACTURE OF ARTICLES FOR ACCURATE FISHING PRODUCTS UPON REQUEST		PART NAME: BOSS TOTAL ASSEMBLY		ON
± .01 - .003 WHEN NOT SHOWN		APPROVED:		DATE:	ORDER:	MG ENG
ANGLES 12-1 DEGREE		DRAWN:		DATE:	ORDER:	FDT ENG
.25 TO 1.5 INSIDE CORNER RADIUS		APPROVED:		DATE:	ORDER:	PATT SHOP
.6350 MICROMILLIMETER FINISH ON MACHINED SURFACES		DRAWING:		THIRD ANGLE PROJECTION		COMPUTER GENERATED
-A- DATUM INDICATING SYMBOL	⊥ PERPENDICULARITY	ACCURATE Fishing Products Los Angeles, CA		DRAWING: BOSS TOTAL 665HM ASSM		SIZE: C
⊕ LOCATION	∠ ANGULARITY	VENDOR: ACCURATE		SCALE: 0.80		SHEET: 1 of 1
◎ CONCENTRICITY	↗ RUNOUT (T.I.R.)	MATERIAL:		WEIGHT-RGS:		
▭ FLATNESS	∥ PARALLELISM					

2 FX2 400 SIDEPLATE SUB-ASSY	1 B-6418	x
2 FX2 500 SIDEPLATE SUB-ASSY	1 B-7508	x
2 FX2 600 SIDEPLATE SUB-ASSY	1 B-7510	x
3 FX2 400 GEAR SIDEPLATE	1 B-6446	x
3 FX2 500 GEAR SIDEPLATE	1 B-6498	x
3 FX2 600 GEAR SIDEPLATE	1 B-6566	x
4 STAINLESS STEEL ANTI-REV BEARING	1 S-3908SS	x
5 GEAR SHAFT BUSHING	1 B-5376	x
5 GEAR SHAFT BUSHING WIDE EXTREME	1 B-5378	x
6 BOSS 2-SPEED EXTREME MAIN GEAR SHAF	1 B-5444	x
7 FX2-500 6:1 LARGE MAIN GEAR	1 B-5460-1	x
7 FX2-600 5:1 LARGE MAIN GEAR	1 B-5340-1	x
8 SEAL WASHERS	2 B-7268	
9 BOSS MAIN LEVER ARM WASHER	1 B-1028	x
10 ACCU-GRIP HANDLE KNOB END CAP	1 B-5734	
11 FURY 400 500 CONTOUR HANDLE ARM	1 B-5384	x
11 FURY 600 LONG CONTOUR HANDLE ARM	1 B-5772	
12 ACCU-GRIP RUBBER HANDLE KNOB	1 B-5732	x
13 ACCU-GRAIP HANDLE PIN W/ DOUBLE-D	1 B-5696-1	x
14 HANDLE ARM PIN SCREW HEX HEAD	1 L-1722	x
15 FX ATD HANDLE PIN SCREW LEFT HAND	1 B-1190	x
16 FX GEAR SIDEPLATE BEARING	1 B-1272	x
17 FX STRIKE BUTTON	2 L-832	x
18 FX STRIKE BUTTON SPRING	4 70080S	x
19 FX STRIKE BUTTON COVER	2 L-1050	x
20 FX 400 GEAR COVER	1 B-3670	x
20 FX 500 GEAR COVER	1 B-2850	x
20 FX 600 GEAR COVER	1 B-1626	x
21 FX 400 MAIN LEVER ARM	1 B-1032-1	x
21 FX 500 MAIN LEVER ARM	1 B-2706-1	x
21 FX 600 MAIN LEVER ARM	1 B-1326-1	x
22 FX STRIKE BUTTON SCREWS	4 B-1290	x
24 FX SIDEPLATE FRAME TORX SCREWS	4 B-1294	x
25 FX TENSION CAM TRACK	1 B-6460-1	x
27 FX 400 SINGLE SPEED SPOOL SHAFT	1 B-988	x
28 BOSS TENSION CAM PIN	2 L-872	x
29 BOSS LEVER RETAINER	1 B-1640	x
30 FX TENSION CAM WASHER	1 B-6394	x
31 BOSS TENSION CAM O-RING	1 B-1292	x
34 FX 400 NARROW SPOOL	1 B-6502	x
34 FX 400 SPOOL	1 B-6386	x
34 FX 500 SPOOL	1 B-6492	x
34 FX 500 NARROW FRAME	1 B-6504	
34 FX 600 SPOOL	1 B-6518	
34 FX 600 NARROW SPOOL	1 B-6510	x
34 FX 600 NARROW NARROW SPOOL	1 B-6514	
35 FX 400 NARROW SPOOL 4:1 SUB-ASSY	1 B-6770	x
35 FX 400 SPOOL 4:1 SUB-ASSY	1 B-6772	x
35 FX 500 SPOOL 4:1 SUB-ASSY	1 B-6764	x

35 FX 500 NARROW SPOOL 4:1 SUB-ASSY	1 B-6766	x
35 FX 600 SPOOL 4:1 SUB-ASSY	1 B-6768	x
35 FX 600 NARROW 6:1 SUB-ASSY	1 B-6765	x
35 FX 600 NARROW NARROW SPOOL 4:1 SUB	1 B-6767	x
35 FX 400 NARROW SPOOL 6:1 SUB-ASSY	1 B-6770-1	
35 FURY 400 SPOOL 6:1	1 B-6772-1	x
35 FX 500 SPOOL 4:1 SUB-ASSY	1 B-6764-1	x
35 FX 500 NARROW SPOOL 6:1 SUB-ASSY	1 B-6766-1	
35 FX 600 SPOOL 6:1 SUB-ASSY	1 B-6768-1	
35 FX 600 NARROW 6:1 SUB-ASSY	1 B-6765-1	
35 FX 600 NARROW NARROW SPOOL 6:1 SUB	1 B-6767-1	
36 BOSS SPOOL BEARING	2 B-1624	x
37 BOSS 400 CARBON FIBER WASHER	1 B-1046	x
37 BOSS 500 FIBER WASHER	1 B-1142	x
37 BOSS 600 FIBER WASHER	1 B-1264	x
38 FX CLICKER PINS	1 B-6384	x
39 FX SPOOL COVER SCREW	8 B-2754	x
41 FX2-400N 500N 600NN SPOOL SHAFT	1 B-6634	x
41 FX2 400 600N SPOOL SHAFT	1 B-6388	x
41 FX2 500 SPOOL SHAFT	1 B-6470	x
41 FX2 600 SPOOL SHAFT	1 B-6632	x
42 FX SPOOL SHAFT SLEEVE 400N 500N 600N	1 B-7732	x
42 FX SPOOL SHAFT SLEEVE 400 600N	1 B-7734	x
42 FX SPOOL SHAFT SLEEVE 500	1 B-7736	x
42 FX SPOOL SHAFT SLEEVE 600	1 B-7738	
43 FX SPOOL SHAFT BUSHING	1 B-6414	
44 FX SPOOL SHAFT PIN	1 B-6410	
45 FX SPOOL SHAFT BELLEVILLE WASHER	2 B-6398	
46 BOSS DRAG CAP RETAINER	1 B-1048	
47 BOSS BELLEVILLE WASHER	1 B-1020	x
48 BOSS 400 400N DRAG WASHER	1 B-1014	x
48 BOSS 500 DRAG WASHER	1 B-1156	x
48 BOSS 600 DRAG WASHER	1 B-1314	x
49 BOSS SPOOL SHAFT SPRING	2 B-1718	x
51 FX2 PINION GEAR 6:1H 3:1L	1 B-6440	x
51 FX2 PINION GEAR 5:1H 2:1L	1 B-6604	x
52 FURY PINION BEARING	1 B-6464	x
53 BOSS SPOOL SHAFT ADJUSTMENT WASHER	2 B-1254	x
54 BOSS SPOOL SHAFT ADJUSTMENT WASHER	2 B-1606	x
55 BOSS SPOOL SHAFT ADJUSTMENT WASHER	2 B-1610	x
57 BOSS 400 SPOOL COVER G/S	1 B-1524	x
57 BOSS 500 SPOOL COVER G/S	1 B-1526	x
57 BOSS 600 SPOOL COVER G/S	1 B-1528	x
61 FX 400 NARROW FRAME SUB-ASSY	1 B-5756	x
61 FX 400 FRAME SUB-ASSY	1 B-6758	x
61 FX 500 FRAME SUB-ASSY	1 B-7526	x
61 FX 500 NARROW FRAME SUB-ASSY	1 B-7524	x
61 FX 600 FRAME SUB-ASSY	1 B-7528	x
61 FX 600 NARROW FRAME SUB-ASSY	1 B-7530	x

61	FX 600 EXTRA NARROW FRAME SUB-ASSY	1 B-7532	x
62	FX 400 NARROW FRAME	1 B-6570	x
62	FX 400 FRAME	1 B-6416	x
62	FX 500 FRAME	1 B-6494	x
62	FX 500 NARROW FRAME	1 B-6504	x
62	FX 600 FRAME	1 B-6516	
62	FX 600 NARROW FRAME	1 B-6508	x
62	FX 600 NARROW NARROW FRAME	1 B-6512	x
63	BOSS CLICKER RING	1 522	x
64	BOSS CLICKER KNOB WASHER	1 B-1126S	x
65	BOSS CLICKER KNOB	1 B-1038	x
66	BOSS CLICKER DOG	1 B-1040-1	x
68	CLICKER SCREWS	2 B-1296	x
70	BOSS FRAME STUD	2 B-1154	x
71	BOSS BASE FOOT	1 B-1084	x
72	BOSS BASE FOOT SCREW	4 B-1278	x
73	ATD GEAR SHIFTER SHAFT	1 L-1342	x
76	BOSS 2-SPEED HANDLE WASHER EXTREME	1 B-5360-1	x
77	BOSS 2-SPEED HANDLE WASHER EXTREME	1 B-5360-2	x
78	BOSS 2-SPEED HANDLE WASHER EXTREME	1 B-5360-4	x
79	BOSS 2-SPEED HANDLE SUPPORT WASHER	1 B-6066	x
80	FURY 400/500 HANDLE SUB-ASSY	1 B-7899-1	
80	FURY 600 HANDLE SUB-ASSY	1 B-7899-3	
84	BOSS NARROW FRAME CLAMP	1 B-660N	x
84	BOSS FRAME CLAMP	1 B-660	
85	BASE CLAMP FRAME SLEEVE NUTS	2 B-1444	x
86	BOSS 2-SPEED MAIN GEAR SHAFT WASHER	1 B-5430	x
88	BOSS 2-SPEED SMALL MAIN GEAR 3:1	1 B-5338	
88	BOSS 2-SPEED SMALL MAIN GEAR 2:1	1 B-5320	
89	BOSS 2-SPEED SMALL MAIN GEAR RETAINER	1 B-5418	
90	BOSS 2-SPEED GEAR SHIFTER	1 B-5318	
91	BOSS 2-SPEED DRIVE GEAR SHAFT	1 B-5358	
92	BOSS 2-SPEED GEAR SHIFT SPRING	1 B-5372	
93	BOSS 2-SPEED GEAR SHIFT COVER SPACE	1 B-5380	
94	MAIN LEVER ARM PIN	1 L-1638	
95	ATD MAIN LEVER ARM PIN SPRING	1 L-1362	
96	BOSS 2-SPEED GEAR SHIFT SPRING LARGE	1 B-5374	
97	BOSS 2-SPEED SHIFT PIN PUSHER	1 B-5364	
98	BOSS 2-SPEED SMALL MAIN GEAR 3:1	1 B-5338	
99	BOSS 2-SPEED GEAR SHIFT HANDLE SCREW	1 B-5356	
100	BOSS 2-SPEED GEAR SHIFT COVER SPRING	1 B-4818	
101	BOSS 2-SPEED GEAR SHIFT SLIDE	1 B-5390	
102	BOSS 2-SPEED SHIFT SHAFT PIN	1 B-5386	
103	BOSS 2-SPEED GEAR SHIFT COVER	1 B-5382	
104	BOSS 2-SPEED GEAR SHIFT COVER SCREW	2 B-4820	
105	BOSS 2-SPEED MECHANISM SUB-ASSY	1 B-15670	