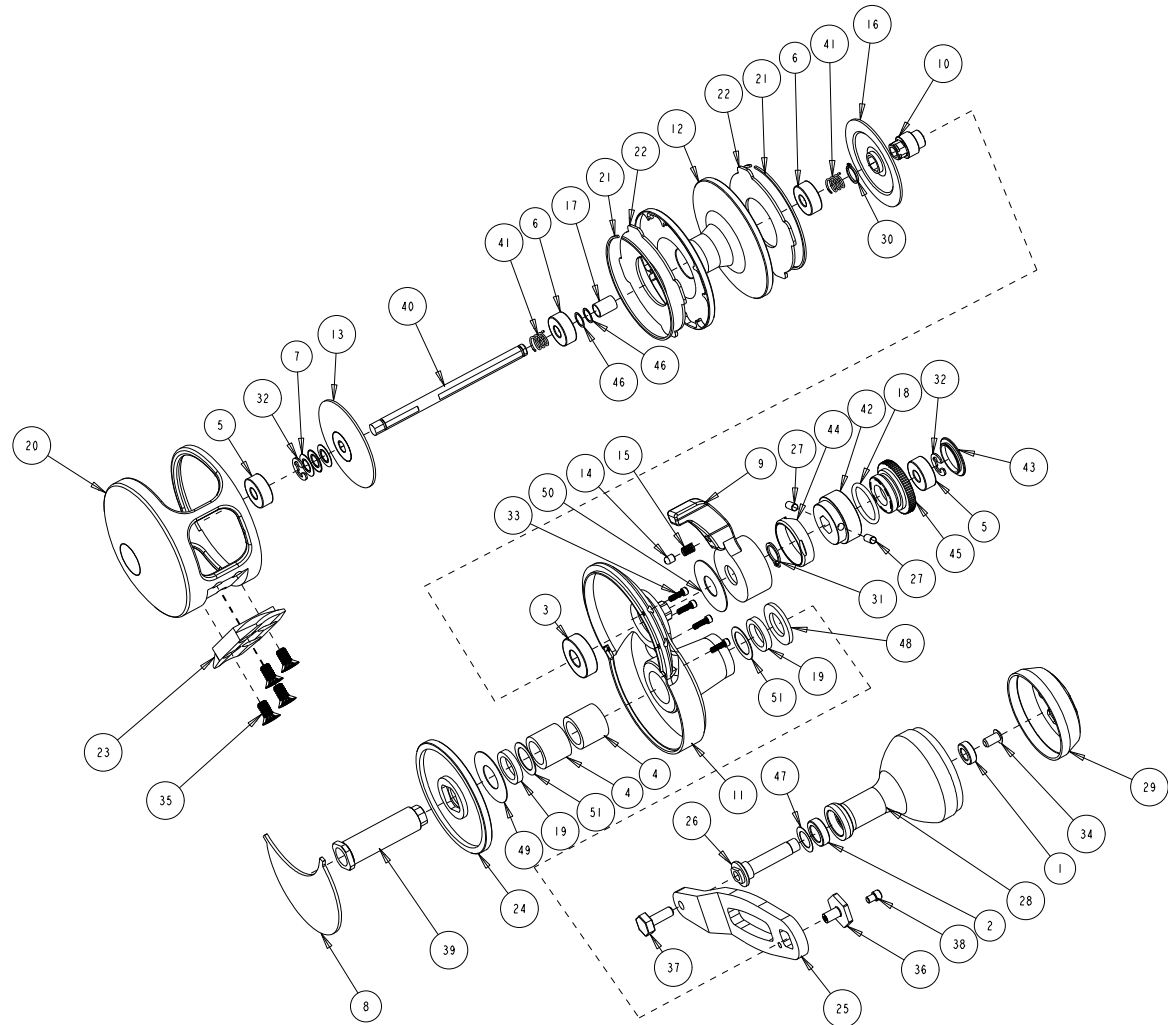


**BILL OF MATERIAL**

No	Component	Qty	Part No
1	BEARING_195_354_116	1	S-4286
2	BEARING_275_432_129	1	S-4288
3	BEARING_275_669_200	1	B-1272
4	BEARING_ANTI_REV_339	2	B-1270
5	BEARING_SEALED_500_187_195	2	B-1280
6	BEARING_SPOOL_500_187_195	2	B-1624
7	BELLEVILLE_WASHER_190_375_015	3	B-6398-1
8	BOSS_300_GEAR_COVER	1	B-8204
9	BOSS_300_LEVER	1	B-8190
10	BOSS_300_PINION_GEAR_1SP_6	1	B-8270
11	BOSS_300_SIDEPLATE	1	B-8272
12	BOSS_300_SPOOL	1	B-8188
13	BOSS_DRAG_WASHER_CS	1	B-7652
14	BOSS_MAIN_ARM_PIN	1	L-1638
15	BOSS_MAIN_ARM_SPRING	1	L-1362
16	BOSS_PINION_DRAG_WASHER	1	B-7650
17	BOSS_SLEEVE_SPOOL	1	B-8238
18	BOSS_TENSION_CAM_LARGE_ORING	1	B-1292
19	BUSHING_GEAR_SHAFT_393	2	B-1632
20	BV-300_FRAME	1	B-8162
21	DRAG_WASHER_RETAINER_1_790	2	B-8180
22	FIBER_WASHER_1-710	2	B-1046
23	FOOT_SMALL	1	B-2012
24	GEAR_MAIN_1-1_6-1	1	B-8266
25	HANDLE_ARM_3_025X	1	B-8466
26	HANDLE_PIN_POWERKNOB_SM	1	B-8598
27	PIN_TENSION_CAM	2	L-872
28	POWERKNOB_BODY_NG_SM	1	S-8470
29	POWERKNOB_CAP_NG_SM	1	S-8514
30	RETAINER_250_OD	1	B-8542
31	RETAINER_312_SHAFT_OD	1	B-1640
32	RETAINER_SHAFT_3-16	2	B-1284
33	SCREW_1-72_250_SC	4	B-8130-1
34	SCREW_6-32_250_BUTTON	1	S-4266
35	SCREW_8-32_5-16_FH	4	B-1278
36	SCREW_HANDLE_500	1	B-1274
37	SCREW_HANDLE_ARM	1	L-1722
38	SCREW_SOCKET_CAP_5_40_250	1	B-5806
39	SHAFT_GEAR_393	1	B-7648
40	SPOOL_SHAFT_300	1	B-8468
41	SPRING_SPOOL_SHAFT_3-16	2	B-1718
42	TENSION_CAM	1	B-998
43	TENSION_CAM_COVER_SM	1	B-1080
44	TENSION_CAM_TRACK	1	B-996-6
45	TENSION_CAM_WASHER	1	B-8568
46	WASHER_195_247_005	2	B-7984
47	WASHER_277_428_005	1	S-4320
48	WASHER_GEAR_SHAFT_400_695_060	1	B-8534
49	WASHER_MAIN_GEAR_393	1	B-1658
50	WASHER_MAIN_LEVER_875	1	B-1028
51	WASHER_SEAL_387_556_010	2	B-8566



G	<p><b>GENERAL TOLERANCES UNLESS NOTED</b></p> <p>UNFINISHED TO UNFINISHED SURFACE DIMENSIONS SHALL CONFORM</p> <p>± 1.5 ON UNFINISHED TO MACHINED SURFACE DIMENSIONS</p> <p>±.25 TO 1.0 OUTSIDE CORNER RADIUS OR CHAMFER</p> <p>±.25 TO 1.5 INSIDE CORNER RADIUS</p> <p>✓ 6350 MICROMILLIMETER FINISH ON MACHINED SURFACES</p>		<p>THIS DRAWING IS THE PROPERTY OF ACCURATE FISHING PRODUCTS CORONA, CA AND SHALL NOT EXCEPT UPON PRIOR WRITTEN PERMISSION OF PTC BE USED FOR ANY PURPOSE EXCEPT THE MANUFACTURE OF ARTICLES FOR ACCURATE FISHING PRODUCTS DRAWING TO BE RETURNED UPON REQUEST</p>	<p>DESCRIPTION: <i>BV-300 Valiant</i></p> <p>PART NAME: <i>BOSS_300</i></p> <p>DRAWN: <i>Douglas Nilsen</i> DATE: <i>Dec-01-15</i></p> <p>APPROVED: _____ DATE: _____ ORDER: _____</p>		<p>QA</p> <p>MFG ENG</p> <p>EDT ENG</p> <p>PATT SHOP</p>	COPY	APPR	
	<p>⊠ DATUM INDICATING SYMBOL</p> <p>⊕ LOCATION</p> <p>⊙ CONCENTRICITY</p> <p>▭ FLATNESS</p>			<p>⊥ PERPENDICULARITY</p> <p>∠ ANGULARITY</p> <p>↗ RUNOUT (T.I.R.)</p> <p>∥ PARALLELISM</p>	<p>THIRD ANGLE PROJECTION</p> <p>COMPUTER GENERATED</p>		<p>SIZE: <b>C</b></p>		
	<p>ACCURATE FISHING PRODUCTS CORONA, CA</p>			<p>DRAWING: <i>BOSS_300</i></p>					
	<p>PROJECT: _____ L/O REF: _____ DWG REF: _____</p>			<p>SCALE: <i>0.75</i></p>		<p>SHEET: <i>1 of 1</i></p>			