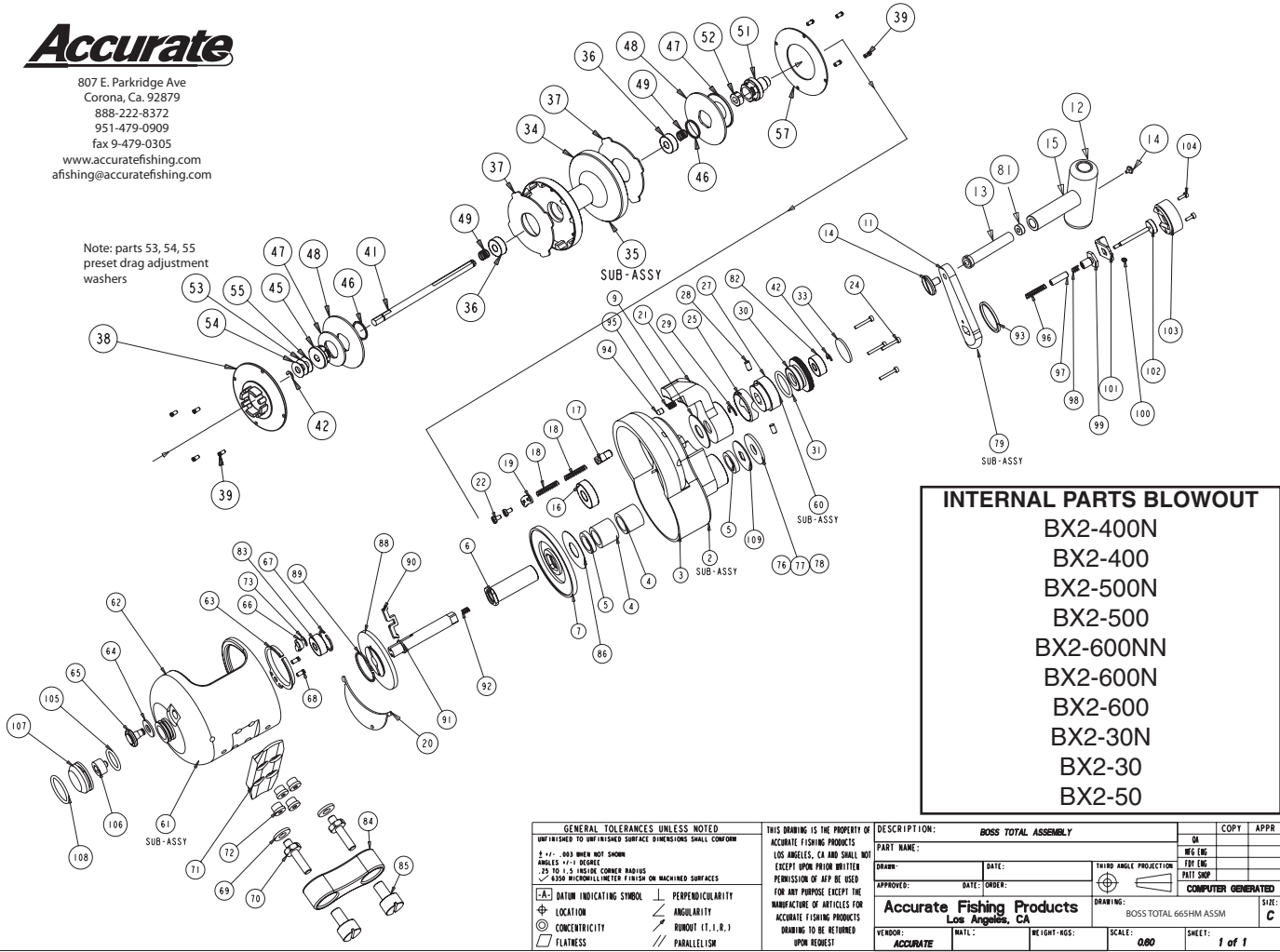


# Accurate

807 E. Parkridge Ave  
Corona, Ca. 92879  
888-222-8372  
951-479-0909  
fax 9-479-0305

www.accuratefishing.com  
afishing@accuratefishing.com

Note: parts 53, 54, 55  
preset drag adjustment  
washers



**INTERNAL PARTS BLOWOUT**

BX2-400N  
BX2-400  
BX2-500N  
BX2-500  
BX2-600NN  
BX2-600N  
BX2-600  
BX2-30N  
BX2-30  
BX2-50

<b>GENERAL TOLERANCES UNLESS NOTED</b> UNFINISHED TO UNFINISHED SURFACE DIMENSIONS SHALL CONFORM ANGLES 45° UNLESS SHOWN R5 TO 1.5 UNLESS SHOWN .030 MICROMILLIMETER FINISH ON MACHINED SURFACES		THIS DRAWING IS THE PROPERTY OF ACCURATE FISHING PRODUCTS LOS ANGELES, CA AND SHALL NOT BE REPRODUCED OR COPIED EXCEPT UPON PRIOR WRITTEN PERMISSION OF AFP BE USED FOR ANY PURPOSE EXCEPT THE MANUFACTURE OF ARTICLES FOR ACCURATE FISHING PRODUCTS DRAWING TO BE RETURNED UPON REQUEST		<b>DESCRIPTION:</b> BOSS TOTAL ASSEMBLY PART NAME: _____ DRAWN: _____ DATE: _____ APPROVED: _____ DATE: _____ <b>Accurate Fishing Products</b> Los Angeles, CA THIRD ANGLE PROJECTION BOSS TOTAL 665HM ASSM SCALE: 0.80 SHEET: 1 of 1	
--	--	--	--	---	--

NO.	COMPONENT NAME	QTY	PART#	NO.	COMPONENT NAME	QTY	PART#	NO.	COMPONENT NAME	QTY	PART#
2	BX2 400 SIDEPLATE SUB-ASSY	1	BX-5475	35	BX2 400 SPOOL SUB-ASSY	1	B-5182	61	BX2 50 FRAME SUB-ASSY	1	B-5476
2	BX2 500 SIDEPLATE SUB-ASSY	1	BX-5474	35	BX2 500N SPOOL SUB-ASSY	1	B-5136	62	BX2 400N FRAME	1	B-3816
2	BX2 600 SIDEPLATE SUB-ASSY	1	BX-5477	35	BX2 500 SPOOL SUB-ASSY	1	B-4852	62	BX2 400 FRAME	1	B-3624
2	BX2 30 SIDEPLATE SUB-ASSY	1	B-5474	35	BX2 600NN SPOOL SUB-ASSY	1	B-5128	62	BX2 500N FRAME	1	B-5650X
2	BX2 50 SIDEPLATE SUB-ASSY	1	B-5478	35	BX2 600N SPOOL SUB-ASSY	1	B-5120	62	BX2 500 FRAME	1	B-3744
3	BX2 400 SIDEPLATE	1	B-5440	35	BX2 600 SPOOL SUB-ASSY	1	B-5090	62	BX2 600 FRAME	1	B-3758
3	BX2 500 SIDEPLATE	1	B-5442	35	BX2 30N SPOOL SUB-ASSY	1	B-5756	62	BX2 30N FRAME	1	B-5730
3	BX2 600 SIDEPLATE	1	B-5438	35	BX2 30 SPOOL SUB-ASSY	1	B-5468	62	BX2 30 FRAME	1	B2-5392
3	BX2 30 SIDEPLATE	1	B-5326	35	BX2 50 SPOOL SUB-ASSY	1	B-5480	62	BX2 50 FRAME	1	B2-5394
3	BX2 50 SIDEPLATE	1	B-5324	36	BX2 SPOOL BEARING	2	B-1624	63	BX2 CLICKER RING	1	522
4	BX2 ANTI-REVERSE BEARING	1	S-3908	37	BX2 400 FIBER WASHER	2	B-1046	64	BX2 CLICKER KNOB WASHER	1	B-1126
5	BX2 GEAR SHAFT BUSHING .105	1	B-5376	37	BX2 500 FIBER WASHER	2	B-1142	65	BX2 CLICKER KNOB	1	B-1038
5	BX2 GEAR SHAFT BUSHING .400	1	B-5378	37	BX2 600 FIBER WASHER	2	B-1264	66	BX2 CLICKER DOG	1	B-1040
6	BX2 MAIN GEAR SHAFT	1	B-5444	37	BX2 30 FIBER WASHER	2	L-830	67	BX2 FRAME RETAINER	1	B-1052
7	BX2 LARGE MAIN GEAR 6:1	1	B-5460	37	BX2 50 FIBER WASHER	2	L-940	68	BX2 CLICKER RING SCREWS	2	B-1296
7	BX2 LARGE MAIN GEAR 5:1	1	B-5340	38	BX2 400 SPOOL COVER C/S	1	B-1012	69	BX2 WASHER 30/50	2	L-1560
9	BX2 MAIN LEVER ARM WASHER	1	B-1028	38	BX2 500 SPOOL COVER C/S	1	B-1684	69	BX2 WASHER 400/500/600	2	B-1276
11	BX2 EXTREME CONTOUR HANDLE ARM	1	B-5384	38	BX2 600 SPOOL COV C/S	1	B-1704	70	BX2 NUT 400/500/600	2	B-1154
12	BX2 EXTREME HANDLE KNOB	1	B-5428BLL	38	BX2 30 SPOOL COV C/S	1	B-5420	70	BX2 NUT 30/50	2	L-1378
13	BX2 EXTREME HANDLE ARM PIN	1	L-932	38	BX2 50 SPOOL COV C/S	1	B-5422	71	BX2 FRAME BASE (FOOT)	1	B-1084
14	BX2 HANDLE SCREW-LEFT HAND	2	B-1190	39	BX2 SPOOL COVER SCREWS	8	B-2754	72	BX2 FRAME BASE SCREWS	4	B-1278
15	BX2 HANDLE KNOB HUB	1	AR-50040	41	BX2 400N, 500N, 600NN SPOOL SHAFT	1	B-5066	73	BX2 CLICKER KNOB RETAINER	1	L-1342
16	BX2 GEAR SIDEPLATE BEARING	1	B-1272	41	BX2 400, 600N, 30N SPOOL SHAFT	1	B-5068	76	BX2 HANDLE WASHER .010	1	B-5360
17	BX2 STRIKE BUTTON	2	L-832	41	BX2 500 SPOOL SHAFT	1	B-4816	77	BX2 HANDLE WASHER .015	1	B-5360
18	BX2 STRIKE BUTTON SPRING	4	70080S	41	BX2 600 SPOOL SHAFT	1	B-5048	78	BX2 HANDLE WASHER .020	1	B-5360
19	BX2 STRIKE BUTTON COVER	2	L-1050	41	BX2 30,50 SPOOL SHAFT	1	B-5052	79	BX2 HANDLE SUB-ASSY	1	B-5472
20	BX2 400 GEAR COVER	1	B-1502	42	BX2 SPOOL SHAFT RETAINER	1	B-1284	82	BX2 TENSION CAM	1	B-1280
20	BX2 500 GEAR COVER	1	B-1504	45	BX2 CLICKER DRAG CAP	1	B-984	83	BX2 FRAME BEARING	1	B-1280
20	BX2 600 GEAR COVER	1	B-1506	46	BX2 DRAG CAP RETAINER	2	B-1048	84	BX2 FRAME CLAMP	1	B-660
20	BX2 30 GEAR COVER	1	B-5314	47	BX2 BEVEL WASHER 30/50	2	B-5370	85	BX2 SLEEVE NUT 400/500/600	2	B-1444
20	BX2 50 GEAR COVER	1	B-5322	47	BX2 BEVEL WASHER 400/500/600	2	B-1020	85	BX2 SLEEVE NUT 30/50	2	L-1378
21	BX2 400 MAIN LEVER ARM	1	B-1032	48	BX2 400 TITANIUM WASHER	2	B-1014	86	BX2 MAIN GEAR SHAFT WASHER .010	1	B-5430
21	BX2 500 MAIN LEVER ARM	1	B-2706	48	BX2 500 TITANIUM WASHER	2	B-1156	87	BX2 CLICKER KNOB WASHER .015	1	B-3128
21	BX2 600 MAIN LEVER ARM	1	B-1326	48	BX2 600, 30 TITANIUM WASHER	2	B-1314	88	BX2 SMALL MAIN GEAR 3:1	1	B-5338
21	BX2 30 MAIN LEVER ARM	1	B-5424	48	BX2 50 TITANIUM WASHER	2	B-5368	88	BX2 SMALL MAIN GEAR 2:1	1	B-5320
21	BX2 50 MAIN LEVER ARM	1	B2-5426	49	BX2 SPOOL SPRING 30/50	2	B-1718-1	89	BX2 SMALL MAIN GEAR RETAINER	1	B-5418
22	BX2 STRIKE BUTTON SCREWS	4	B-1290	49	BX2 SPOOL SPRING 400/500/600	2	B-1718	90	BX2 GEAR SHIFTER	1	B-5318
24	BX2 400/500/600 FRAME SCREWS	4	B-1294	51	BX2 PINION GEAR 2.2:1/5:1	1	B-4902	91	BX2 DRIVE GEAR SHAFT	1	B-5358
24	BX2 30/50 FRAME SCREWS	6	B-5434	51	BX2 PINION GEAR 3:1/6:1	1	B-4686	92	BX2 GEAR SHAFT SPRING-SMALL	1	B-4828
25	BX2 400, 500, 600 CAM TRACK	1	B-996	52	BX2 PINION BUSHING	1	B-990	93	BX2 GEAR SHIRT COVER SPACER	1	B-5380
25	BX2 30, 50 TENSION CAM TRACK	1	B-996-1	53	BX2 SPOOL ADJ. WASHER .015	1	B-1254	94	BX2 MAIN LEVER PLUNGER	1	L-1638
27	BX2 TENSION CAM	1	B-988	54	BX2 SPOOL ADJ. WASHER .020	1	B-1606	95	BX2 MAIN LEVER PLUNGER SPRING	1	L-1362
28	BX2 TENSION CAM PIN	2	L-872	55	BX2 SPOOL ADJ. WASHER .025	1	B-1610	96	BX2 GEAR SHAFT SPRING-LARGE	1	B-4826
29	BX2 MAIN LEVER RETAINER	1	B-1640	57	BX2 400 SPOOL COVER G/S	1	B-1524	97	BX2 SHIFT PIN PUSHER	1	B-5364
30	BX2 TENSION CAM WASHER	1	B-986	57	BX2 500 SPOOL COVER G/S	1	B-1526	98	BX2 SHIFT PIN CUSHION SPRING	1	B-5388
31	BX2 TENSION CAM O-RING	1	B-1292	57	BX2 600 SPOOL COVER G/S	1	B-1528	99	BX2 GEAR SHAFT HANDLE SCREW	1	B-5356
33	BX2 TENSION CAM COVER	1	B-1080	57	BX2 30 SPOOL COVER G/S	1	B-5412	100	BX2 GEAR SHIFT COVER SPRING	1	B-4818
34	BX2 400N SPOOL	1	B-1078	57	BX2 50 SPOOL COVER G/S	1	B-5410	101	BX2 GEAR SHIFT SLIDE	1	B-5390
34	BX2 400 SPOOL	1	B-1044	60	BX2 TENSION CAM SUB-ASSY	1	B-1614	102	BX2 GEAR SHIFT SHAFT PIN	1	B-5386
34	BX2 500N SPOOL	1	B-3044	61	BX2 400N FRAME SUB-ASSY	1	B-5718X	103	BX2 GEAR SHIFT COVER	1	B-5382
34	BX2 500 SPOOL	1	B-1088	61	BX2 400 FRAME SUB-ASSY	1	B-3626	104	BX2 GEAR SHIFT COVER SCREWS	2	B-4820
34	BX2 600NN SPOOL	1	B-5126	61	BX2 500N FRAME SUB-ASSY	1	B-5724X	105	BX2 CAST CONTROL FRAME O-RING	1	B-3630
34	BX2 600N SPOOL	1	B-2092	61	BX2 500 FRAME SUB-ASSY	1	B-3746	106	BX2 CAST CONTROL FRAME SCREW	1	B-3364
34	BX2 600 SPOOL	1	B-1092	61	BX2 600NN FRAME SUB-ASSY	1	B-5714X	107	BX2 CAST CONTROL FRAME KNOB	1	B-3478
34	BX2 30N SPOOL	1	B-5728	61	BX2 600N FRAME SUB-ASSY	1	B-5712X	108	BX2 CAST CONTROL FRAME KNOB CLIP	1	B-3628
34	BX2 30 SPOOL	1	B2-5264	61	BX2 600 FRAME SUB-ASSY	1	B-3718	109	BX2 HANDLE SUPPORT WASHER	1	B-5362
34	BX2 50 SPOOL	1	B2-5266	61	BX2 30N FRAME SUB-ASSY	1	B-5758				
35	BX2 400N SPOOL SUB-ASSY	1	B-6000	61	BX2 30 FRAME SUB-ASSY	1	B-5466				