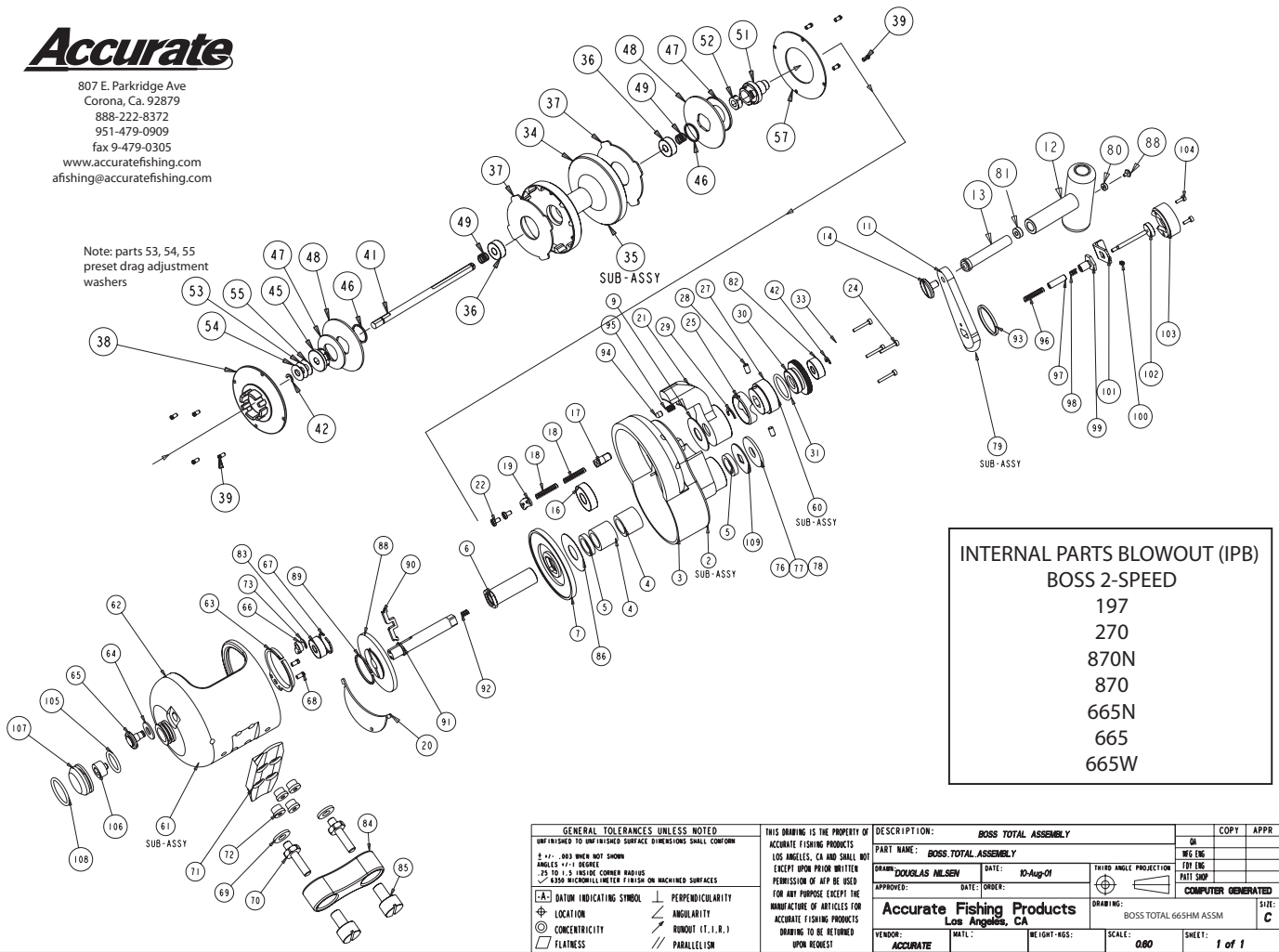


# Accurate

807 E. Parkridge Ave  
 Corona, Ca. 92679  
 888-222-8372  
 951-479-0909  
 fax 9-479-0305  
 www.accuratefishing.com  
 afishing@accuratefishing.com

Note: parts 53, 54, 55  
 preset drag adjustment  
 washers



**INTERNAL PARTS BLOWOUT (IPB)**  
**BOSS 2-SPEED**  
 197  
 270  
 870N  
 870  
 665N  
 665  
 665W

**GENERAL TOLERANCES UNLESS NOTED**  
 UNFINISHED TO DIMENSION SURFACE DIMENSIONS SHALL CONFORM  
 ±.01 - .005 WHEN NOT SHOWN  
 ANGLES 45° & 90° UNLESS NOTED  
 R.05 TO R.25 FINISH CORNER RADIUS  
 ±.020 MICROMILLIMETER FINISH ON MACHINED SURFACES

⊕ DATUM INDICATING SYMBOL  
 ⊕ LOCATION  
 ⊙ CONCENTRICITY  
 ▭ FLATNESS

⊥ PERPENDICULARITY  
 ∠ ANGULARITY  
 ∥ SURF (1, I, R, 1)  
 ∥ PARALLELISM

THIS DRAWING IS THE PROPERTY OF  
 ACCURATE FISHING PRODUCTS  
 LOS ANGELES, CA AND SHALL NOT  
 BE REPRODUCED OR COPIED  
 EXCEPT UPON PRIOR WRITTEN  
 PERMISSION OF AFP BE USED  
 FOR ANY PURPOSE EXCEPT THE  
 MANUFACTURE OF ARTICLES FOR  
 ACCURATE FISHING PRODUCTS  
 DRAWING TO BE RETURNED  
 UPON REQUEST

DESCRIPTION: BOSS TOTAL ASSEMBLY		QTY	APPR
PART NAME: BOSS TOTAL ASSEMBLY		QTY	APPR
DATE: 10-Aug-01	THIRD ANGLE PROJECTION	QTY	APPR
APPROVED: Douglas Nilssen	DATE: 10-Aug-01	QTY	APPR
DATE: 10-Aug-01	COMPUTER GENERATED	QTY	APPR
Accurate Fishing Products Los Angeles, CA	DRAWING: BOSS TOTAL 665HM ASSM	QTY	APPR
VENDOR: ACCURATE	MATERIAL:	SCALE: 0.80	SHEET: 1 of 1

NO.	COMPONENT NAME	QTY	PART#	NO.	COMPONENT NAME	QTY	PART#	NO.	COMPONENT NAME	QTY	PART#
2	BOSS 2SP 197, 270 SIDEPLT SUB-ASSY	1	B-5178	35	BOSS 665NN SPOOL SUB-ASSY	1	B-5128	62	BOSS 870 FRAME	1	B-3744
2	BOSS 2SP 870 SIDEPLATE SUB-ASSY	1	B-4854	35	BOSS 665N SPOOL SUB-ASSY	1	B-5120	62	BOSS 665NN FRAME	1	B-4190
2	BOSS 2SP 665 SIDEPLATE SUB-ASSY	1	B-5088	35	BOSS 665 SPOOL SUB-ASSY	1	B-5090	62	BOSS 665N FRAME	1	B-3888
3	BOSS 2SP 197, 270 SIDEPLATE	1	B-4898	35	BOSS 665W SPOOL SUB-ASSY	1	B-5092	62	BOSS 665 FRAME	1	B-3758
3	BOSS 2SP 870 SIDEPLATE	1	B-4824	36	BOSS SPOOL BEARING	2	B-1624	62	BOSS 665W FRAME	1	B-4518
3	BOSS 2SP 665 SIDEPLATE	1	B-4900	37	BOSS 270 FIBER WASHER	2	B-1142	63	BOSS CLICKER RING	1	522
4	BOSS ANTI-REVERSE BEARING	2	B-1270	37	BOSS 870 FIBER WASHER	2	B-1142	64	BOSS CLICKER KNOB WASHER	1	B-1126
5	BOSS GEAR SHAFT BUSHING	2	B-1632	37	BOSS 665 FIBER WASHER	2	B-1264	65	BOSS CLICKER KNOB	1	B-1038
6	BOSS GEAR SHAFT	1	B-4658	38	BOSS 197, 270 SPOOL COVER C/S	1	B-1012	66	BOSS CLICKER DOG	1	B-1040
7	BOSS 2SP LARGE MAIN GEAR 6:1	1	B-4912	38	BOSS 870 SPOOL COVER C/S	1	B-1684	67	BOSS FRAME RETAINER	1	B-1052
7	BOSS 2SP LARGE MAIN GEAR 5:1	1	B-4666	38	BOSS 665 SPOOL COV C/S	1	B-1704	68	BOSS CLICKER RING SCREWS	2	B-1296
9	BOSS MAIN LEVER WASHER	1	B-1028	39	BOSS SPOOL COVER SCREWS	8	B-2754	69	BOSS FRAME STUD WASHERS	2	B-1276
11	BOSS POWER HANDLE	1	B-4962	41	BOSS 2SP 197, 870N, 665NN SPOOL SHAFT	1	B-5066	70	BOSS FRAME STUD	2	B-1154
12	BOSS HANDLE KNOB	1	S-3752GR	41	BOSS 2SP 270, 665N SPOOL SHAFT	1	B-998	71	BOSS FRAME BASE (FOOT)	1	B-1084
13	BOSS HANDLE PIN	1	S-4134	41	BOSS 2SP 870 SPOOL SHAFT	1	B-5042	72	BOSS FRAME BASE SCREWS	4	B-1278
14	BOSS HANDLE SCREW-LEFT HAND	1	B-1190	41	BOSS 2SP 665 SPOOL SHAFT	1	B-5048	73	BOSS CLICKER KNOB RETAINER	1	L-1342
16	BOSS GEAR SIDEPLATE BEARING	1	B-1272	41	BOSS 2SP 665W SPOOL SHAFT	1	B-5052	76	BOSS HANDLE WASHER .010	1	B-1658
17	BOSS STRIKE BUTTON	1	L-832	42	BOSS SPOOL SHAFT RETAINER	2	B-1284	77	BOSS HANDLE WASHER .015	1	B-1660
18	BOSS STRIKE BUTTON SPRING	2	70080S	44	BOSS HANDLE SCREW BALL	1	B-1646	79	BOSS POWER HANDLE SUB-ASSY	1	HP-4964
19	BOSS STRIKE BUTTON COVER	1	L-1050	45	BOSS CLICKER DRAG CAP	1	B-984	82	BOSS TENSION CAM BEARING	1	B-1280
20	BOSS 197, 270 GEAR COVER	1	B-1502	46	BOSS DRAG CAP RETAINER	2	B-1048	83	BOSS FRAME BEARING	1	B-1280
20	BOSS 870 GEAR COVER	1	B-1504	47	BOSS DRAG BEVEL WASHER	2	B-1020	84	BOSS FRAME CLAMP	1	B-660
20	BOSS 665 GEAR COVER	1	B-1506	48	BOSS 197, 270 TITANIUM WASHER	2	B-1014	85	BOSS FRAME CLAMP SLEEVE NUT	2	B-1444
21	BOSS 197, 270 MAIN LEVER ARM	1	B-1032	48	BOSS 870 TITANIUM WASHER	2	B-1156	86	BOSS MAIN GEAR SHAFT WASHER .010	1	B-2360
21	BOSS 870 MAIN LEVER ARM	1	B-2706	48	BOSS 665 TITANIUM WASHER	2	B-1314	87	BOSS CLICKER DOG WASHER	1	B-3128
21	BOSS 665 MAIN LEVER ARM	1	B-1326	49	BOSS SPOOL SPRING	2	70577S	88	BOSS 2SP SMALL MAIN GEAR 3:1	1	B-4906
22	BOSS STRIKE BUTTON SCREWS	2	B-1290	51	BOSS PINION GEAR 2.2:1/5:1	1	B-4902	88	BOSS 2SP SMALL MAIN GEAR 2:1	1	B-4664
24	BOSS SIDEPLATE SCREWS	4	B-1294	51	BOSS PINION GEAR 3:1/6:1	1	B-4686	89	BOSS 2SP SMALL MAIN GEAR RETAINER	1	L-1108
25	BOSS TENSION CAM TRACK	1	B-996	52	BOSS PINION BUSHING	1	B-990	90	BOSS 2SP GEAR SHIFTER	1	B-4662
27	BOSS TENSION CAM	1	B-988	53	BOSS SPOOL ADJ. WASHER .015	1	B-1254	91	BOSS 2SP DRIVE GEAR SHAFT	1	B-4660
28	BOSS TENSION CAM PIN	2	L-872	54	BOSS SPOOL ADJ. WASHER .020	1	B-1606	92	BOSS 2SP GEAR SHAFT SPRING-SMALL	1	B-4828
29	BOSS MAIN LEVER RETAINER	1	B-1640	55	BOSS SPOOL ADJ. WASHER .025	1	B-1610	93	BOSS 2SP HANDLE WASHER .060	1	B-4970
30	BOSS TENSION CAM WASHER	1	B-986	57	BOSS 197, 270 SPOOL COVER G/S	1	B-1524	94	BOSS MAIN LEVER PLUNGER	1	L-1638
31	BOSS TENSION CAM O-RING	1	B-1292	57	BOSS 870 SPOOL COVER G/S	1	B-1526	95	BOSS MAIN LEVER PLUNGER SPRING	1	L-1362
33	BOSS TENSION CAM COVER	1	B-1080	57	BOSS SPOOL COVER G/S	1	B-1528	96	BOSS 2SP GEAR SHAFT SPRING-LARGE	1	B-4826
34	BOSS 197 SPOOL	1	B-1078	60	BOSS TENSION CAM SUB-ASSY	1	B-1614	97	BOSS 2SP SHIFT PIN PUSHER	1	B-4768
34	BOSS 270 SPOOL	1	B-1044	61	BOSS 197 FRAME SUB-ASSY	1	B-3818	98	BOSS 2SP SHIFT PIN CUSHION SPRING	1	B-1636
34	BOSS 870N SPOOL	1	B-3044	61	BOSS 270 FRAME SUB-ASSY	1	B-3626	99	BOSS 2SP GEAR SHAFT HANDLE SCREW	1	B-4764
34	BOSS 870 SPOOL	1	B-1088	61	BOSS 870N FRAME SUB-ASSY	1	B-3780	100	BOSS 2SP GEAR SHIFT COVER SPRING	1	B-4818
34	BOSS 665NN SPOOL	1	B-5126	61	BOSS 870 FRAME SUB-ASSY	1	B-3746	101	BOSS 2SP GEAR SHIFT SLIDE	1	B-4794
34	BOSS 665N SPOOL	1	B-2092	61	BOSS 665NN FRAME SUB-ASSY	1	B-4194	102	BOSS 2SP GEAR SHIFT SHAFT PIN	1	B-4766
34	BOSS 665 SPOOL	1	B-1092	61	BOSS 665N FRAME SUB-ASSY	1	B-3900	103	BOSS 2SP GEAR SHIFT COVER	1	B-4792
34	BOSS 665W SPOOL	1	B-4592	61	BOSS 665 FRAME SUB-ASSY	1	B-3718	104	BOSS 2SP GEAR SHIFT COVER SCREWS	2	B-4820
35	BOSS 197 SPOOL SUB-ASSY	1	B-6000	61	BOSS 665W FRAME SUB-ASSY	1	B-2008	105	BOSS CAST CONTROL FRAME O-RING	1	B-3630
35	BOSS 270 SPOOL SUB-ASSY	1	B-5182	62	BOSS 197 FRAME	1	B-3816	106	BOSS CAST CONTROL FRAME SCREW	1	B-3364
34	BOSS 870N SPOOL SUB-ASSY	1	B-5136	62	BOSS 270 FRAME	1	B-3624	107	BOSS CAST CNTRL FRAME KNOB-GREY	1	B-3478GR
35	BOSS 870 SPOOL SUB-ASSY	1	B-4852	62	BOSS 870N FRAME	1	B-3780	108	BOSS CAST CONTROL FRAME KNOB CLIP	1	B-3628
								109	BOSS 2SP HANDLE SUPPORT WASHER	1	B-1026